

ROBERTO BECCACECI

CANTICO

Madrigale spirituale


per una voce di baritono e alcuni strumenti,
su testo tratto dalla raccolta *"Immutabili stelle"* di
Mario Pincherle






pianoforte



ABBREVIAZIONI E SEGNI CONVENZIONALI


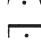

- **s. att.** : senza far sentire l'attacco;
- **l.v.** : lasciar vibrare;
- **sm.to** : smorzato;

- **pont.** : sul ponticello, **[↑]pont.** : vicino al ponticello;
- **tast.** : sulla tastiera, **[↑]tast.** : vicino alla tastiera;
- **SORD.** : con sordina, **~~SORD.~~** : senza sordina;

-  : senza vibrare.

- * : **recitato ritmico:** il timbro - più chiaro o più scuro - è proporzionale alla posizione dei segni nel pentagramma privo della chiave;
- * : **declamato ritmico:** l'ampiezza dell'inflessione è regolata - approssimativamente - dalle altezze indicate;
-  : **mezzo-cantato** (sprechgesang);
-  : flatterzunge (fltz.);
-  : slaptongue all'altezza indicata (slpt.);
-  : pizzicato "strappato";
-  : lasciar vibrare fino a completa estinzione del suono;

-  : accentato, come un tempo forte,
-  : disaccentato, come un tempo debole;

-  : corona breve,
-  : corona normale,
-  : corona lunga;

AVVERTENZE

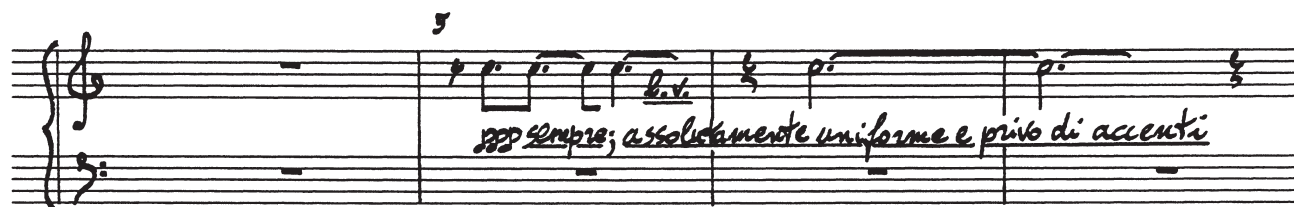
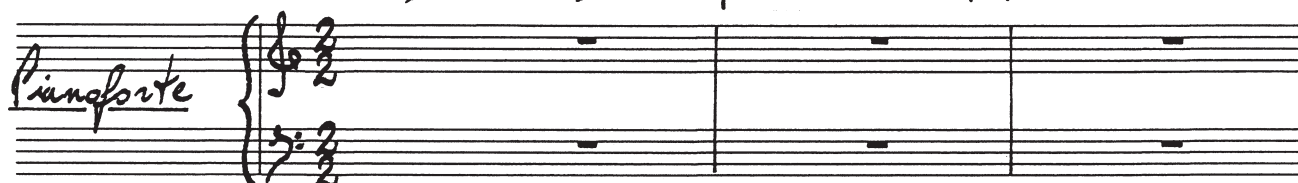
- Secondo la consuetudine, i segni di alterazione hanno valore esclusivamente nella sola misura in cui si trovano.

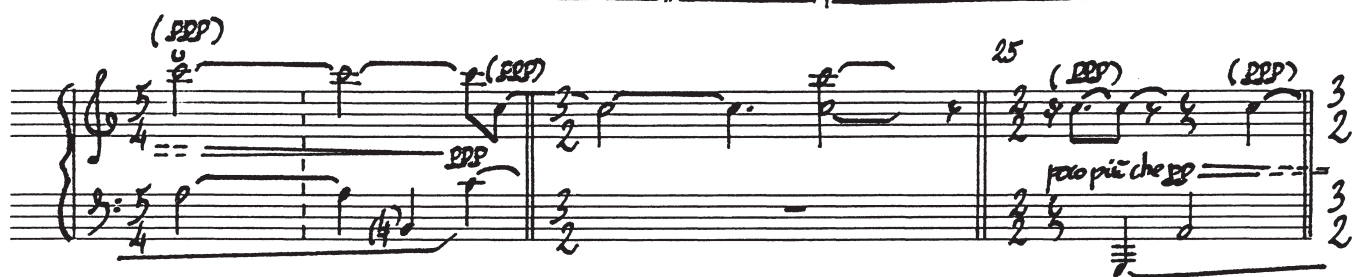
"CANTICO"

Madrigale spirituale per una voce di Baritono e alcuni strumenti
su testo tratto dalla raccolta: "Immutabili stelle", di Mario Pincherle.

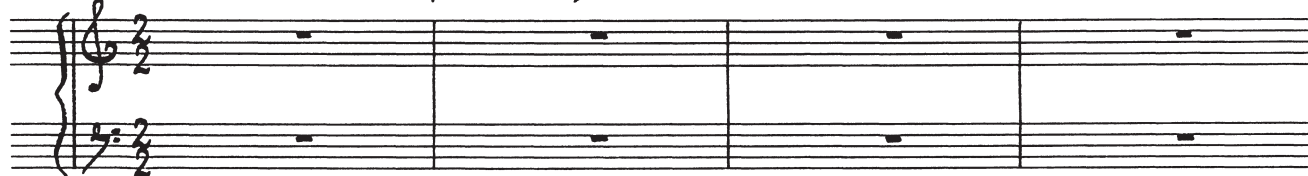
R. BECCACECI
(1991-1992)

Largo estatico; contemplativo (♩ - Tempo 1)





Molto moderato; quasi adagio (♩)



Handwritten musical score for the song "L'Espresso" by Francesco De Gregori. The score is for guitar and voice.

Instrumentation: Guitar and Voice.

Key Signature: C Major (indicated by two sharps, F# and C#).

Time Signature: 4/5.

Tempo: Andante.

Lyrics: "come in eco" and "sempre in sordina".

Handwritten Notes: The score includes a key signature change (two sharps), a tempo marking "Andante", and a dynamic marking "pp". The guitar part features a complex rhythm with a 3/2 measure and a 5/4 measure. The voice part includes the lyrics "come in eco" and "sempre in sordina".

Handwritten musical score for "Lento" in 2/2 time. The score is for piano and includes a right-hand part (treble clef) and a left-hand part (bass clef). The right-hand part starts with a whole rest, followed by a half note G4, a half note F#4, and a half note E4. The left-hand part starts with a whole rest, followed by a half note G3, a half note F#3, and a half note E3. The score is marked with a "5" above the first measure of the right-hand part and a "5" above the first measure of the left-hand part. The tempo is marked "Lento" and the dynamics are "senza rilievo" and "Ped. sempre".

rit. (sensibilmente) ----- ppa tempo

5/4

5/4

(sempre simile)

poco meno

[illegible]

-(rit.)-|| a tempo

quasi p p ppp

65

Handwritten musical score for measures 65-67. The score is written on two staves, each with a treble clef. The key signature has one sharp (F#). The time signature is 3/4. The notation consists of whole notes in the first staff and half notes in the second staff. The notes are: Measure 65: C4, E4; Measure 66: G4, B4; Measure 67: D5, F#5. The piece ends with a double bar line.

4 lento; con grande concitazione (d.)

(senza ped.) aspro, metallico
fff (violentissimo; stridente)

90

Handwritten musical score for piano, measures 90-92. The score is in 2/2 time. Measure 90 has a treble clef with a half note G4 and a bass clef with a half note F3. Measure 91 has a treble clef with a half note A4 and a bass clef with a half note G3. Measure 92 has a treble clef with a half note B4 and a bass clef with a half note A3. The piece ends with a double bar line and a repeat sign.

$\text{♩} = \text{♩}$

Handwritten musical score for piano, measures 93-94. The score is in 3/2 time. Measure 93 has a treble clef with a half note G4 and a bass clef with a half note F3. Measure 94 has a treble clef with a half note A4 and a bass clef with a half note G3. The piece ends with a double bar line and a repeat sign.

(Ped. sempre)

rit. (con estrema gradualità)

95

Handwritten musical score for piano, measures 95-96. The score is in 3/2 time. Measure 95 has a treble clef with a half note G4 and a bass clef with a half note F3. Measure 96 has a treble clef with a half note A4 and a bass clef with a half note G3. The piece ends with a double bar line and a repeat sign.

pp

(rit.)

Handwritten musical score for piano, measures 97-98. The score is in 3/4 time. Measure 97 has a treble clef with a half note G4 and a bass clef with a half note F3. Measure 98 has a treble clef with a half note A4 and a bass clef with a half note G3. The piece ends with a double bar line and a repeat sign.

ppp

--- (rit.) --- al Tempo (Largo)

100

(abbassare tutti i tasti
civeter: compresi nell'interval-
lo indicato.)

fff
(violento)

2220

Adagio ma lievemente animato; inquieto (♩)

105

fff

Ped. tonale..... Ped. "tre c."

f (brutale; graffiante)

p sempre, ma sensibile

senza decresc.

f

110

rit. (sensib.)

(p; senza decresc.) // a tempo

115

120 5 125 *rit. (molto grad.)* ----- *al*

5 3

Tempo 130

assolutamente uniforme fino al termine

135

(ppp)

140 (simile)

(come una campana lontana)

pochiss. più che pp