

ROBERTO BECCACECI

CANTICO

Madrigale spirituale


per una voce di baritono e alcuni strumenti,
su testo tratto dalla raccolta *"Immutabili stelle"* di
Mario Pincherle





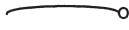


arpa




ABBREVIAZIONI E SEGNI CONVENZIONALI

- **s. att.** : senza far sentire l'attacco;
- **l.v.** : lasciar vibrare;
- **sm.to** : smorzato;

- **pont.** : sul ponticello, **pont.** : vicino al ponticello;
- **tast.** : sulla tastiera, **tast.** : vicino alla tastiera;
- **SORD.** : con sordina, **SORD.** : senza sordina;

-  : senza vibrare.

- * : **recitato ritmico:** il timbro - più chiaro o più scuro - è proporzionale alla posizione dei segni nel pentagramma privo della chiave;
- x : **declamato ritmico:** l'ampiezza dell'inflessione è regolata - approssimativamente - dalle altezze indicate;
-  : **mezzo-cantato** (sprechgesang);
-  : flatterzunge (fltz.);
-  : slap tongue all'altezza indicata (slpt.);
-  : pizzicato "strappato";
-  : lasciar vibrare fino a completa estinzione del suono;
-  : accentato, come un tempo forte,
-  : disaccentato, come un tempo debole;

-  : corona breve,
-  : corona normale,
-  : corona lunga;

AVVERTENZE

- Secondo la consuetudine, i segni di alterazione hanno valore esclusivamente nella sola misura in cui si trovano.

"CANTICO"

Madrigale spirituale per una voce di Baritono e alcuni strumenti
su testo tratto dalla raccolta: "Immutabili stelle", di Mario Pincherle.

R. BECCACECI
(1991-1992)

Largo estatico; contemplativo (♩ = Tempo I)

Barpa

*senza rigidità;
armonioso*

ppp (leggerissimo; come un soffio)

*ppp (delicatissimo;
trasparente)*

RE \sharp ; SOL \sharp FA \sharp FA \sharp ; SOL \flat

SOL \flat FA \flat FA \sharp ; SOL \sharp ; SI \flat SI \flat SOL \flat SOL \sharp

(simile)

FA \sharp SOL \flat SOL \sharp SI \flat RE \flat

20

Fa_b Re₄ FA₄

(sim.)

Lv.

5/4

25

Si_b; FA#; Sol₄ Sol# Sol₄

(sim.)

3/2

rit. -----|| a tempo

Re_b; Fa_b; Sol_b Re₄

3/2

30

FA₄ FA_b FA₄

(sim.)

3/2

35

Re_b Fa_b; Sol₄ Re₄; Sol# FA#; Sol₄; FA₄; Sol_b FA_b FA₄; Sol#

(sim.)

3/2

40

Si_b

3/2

Molto moderato; quasi adagio (♩)

come in eco *ppp*
(sempre molto intenso)

ppp
(sempre simile)
solb

ppp
(sempre simile)
solb

rit. (sensibilmente) - - - - - a tempo

ppp
(sempre simile)
solb

ppp
(sempre simile)
solb

rit. (molto e grad.) - - - - -

ppp
(sempre simile)
solb

-(rit.)-|| a tempo

quasi mp < mp

65

p

Andatissimo; con grande concitazione (d.)

(fff) ma senza brutalità, luminoso

l.v. sulla tav.

sempre molto secchi, taglienti

sf sempre

70

(sempre simile)

(fff)

75

(fff)

LA#

LA#

LA#

LA#

(oss.)

(fff)

(f)

LA#

80

(sff) LA4 (mf)

85

(sff) LA4 LA4 poco meno che mf

(sff) (sempre senza asp.) (mp)

90

poco meno che mp (p)

f f f

rit. (con estrema gradualità)

95

f f f

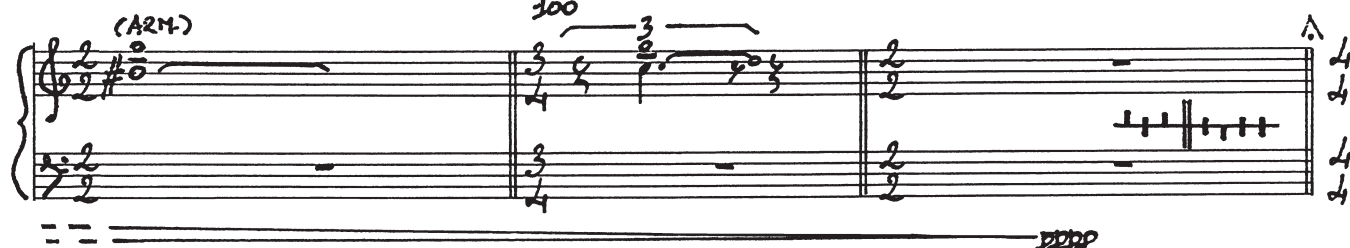
pp

(rit.)

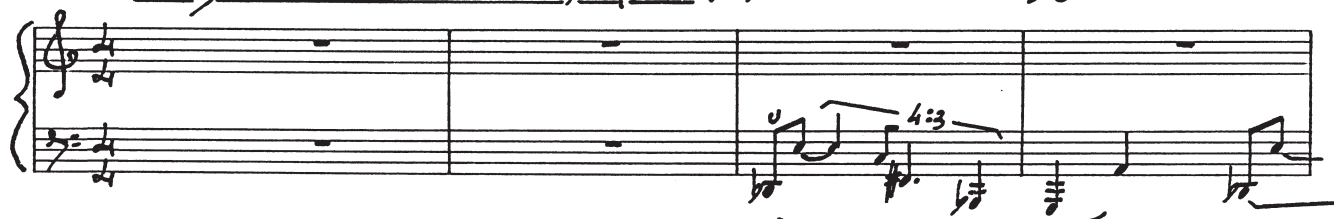


(rit.)

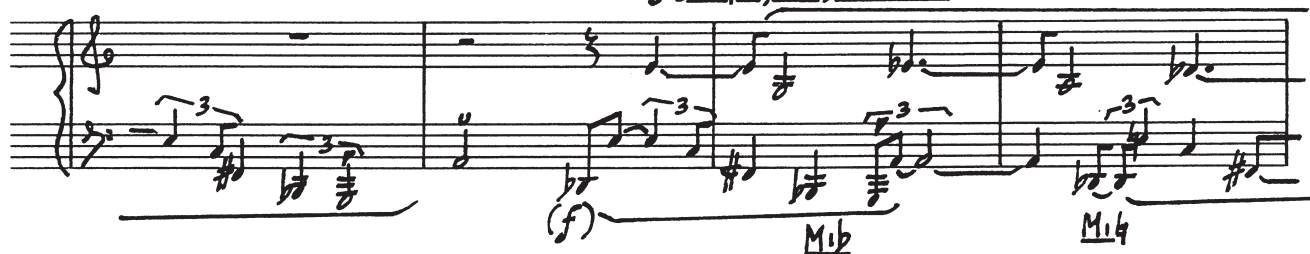
al tempo (largo)

Adagio ma lievemente animato; inquieto (♩)

105

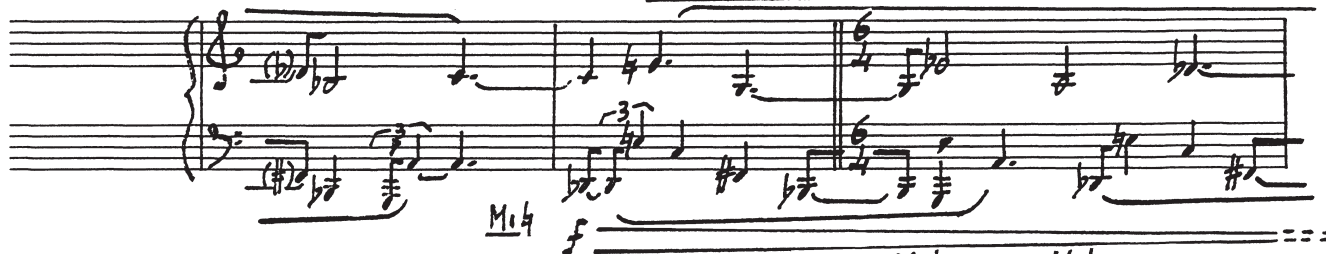
*f* (brutale; graffiante)

sempre, ma sensibile



110

senza decresc.



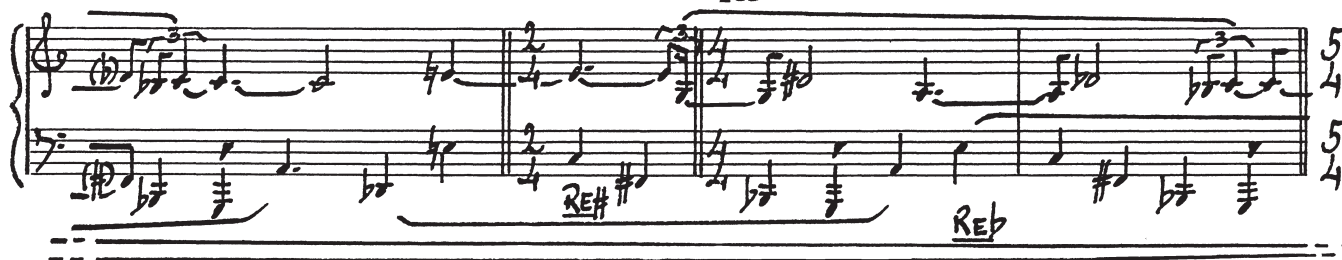
rit. (sensib.)

115

Mib

Mib

a tempo



Handwritten musical score for piano, measures 115-119. The key signature changes from one sharp (F#) to one flat (Bb). The time signature is 5/4. The score includes triplets and dynamic markings.

Re# Reb

Handwritten musical score for piano, measures 120-124. The key signature is one flat (Bb). The time signature is 5/4. The score includes triplets and dynamic markings.

120

pp *p*

Fab Mi b

Handwritten musical score for piano, measures 125-129. The key signature is one flat (Bb). The time signature is 5/4. The score includes triplets and dynamic markings.

125 *rit. (molto grad.)* *al*

poco

Handwritten musical score for piano, measures 130-134. The key signature is one flat (Bb). The time signature is 5/4. The score includes triplets and dynamic markings.

Tempo I 130

Handwritten musical score for piano, measures 135-139. The key signature is one flat (Bb). The time signature is 5/4. The score includes triplets and dynamic markings.

Si 4/3 FA# *ppp s. att. e a sso*

135

Handwritten musical score for measures 135 and 136. Measure 135 is in 2/2 time and contains a piano introduction with the instruction *lento uniforme fino al termine*. Measure 136 is in 3/2 time and features a piano introduction with the instruction *pochiss. meno ppp*. The score includes dynamic markings *ppp* and *(ARM) (pppp)*.

lento uniforme fino al termine

(ARM) (pppp)

ppp

pochiss. meno ppp

Handwritten musical score for measures 137 and 138. Measure 137 is in 2/2 time and contains a piano introduction. Measure 138 is in 3/2 time and features a piano introduction with the instruction *pochiss. meno ppp*. The score includes dynamic markings *ppp* and *(ARM) (pppp)*.

(ARM) (pppp)

ppp

140

Handwritten musical score for measures 140 and 141. Measure 140 is in 2/2 time and contains a piano introduction. Measure 141 is in 3/2 time and features a piano introduction with the instruction *pochiss. meno ppp*. The score includes dynamic markings *ppp* and *(ARM) (pppp)*.

pochiss. meno ppp

ppp

Handwritten musical score for measures 142 and 143. Measure 142 is in 2/2 time and contains a piano introduction. Measure 143 is in 3/2 time and features a piano introduction with the instruction *pochiss. meno ppp*. The score includes dynamic markings *ppp* and *(ARM) (pppp)*.

pochiss. meno ppp

ppp